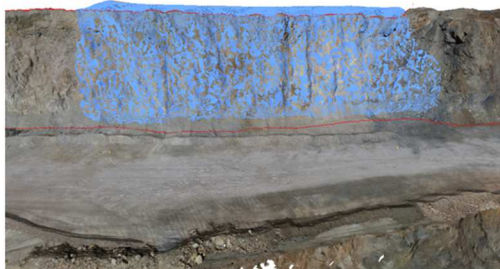


BlastMetriX UAV

SYSTEM SPECIFICATIONS FOR MULTIPHOTO PROCESSING

- *Operating System:* Windows 10 Pro 64-bit
- *Processor and Speed:* Intel Core i5/i7 (Haswell or newer), AMD Ryzen 5/7, 4 processing cores or more, 2.5 GHz or more (recommended: Intel Core i7 or Xeon, 4 processing cores or more, 2.9 GHz or more)
- *Memory (RAM):*
Reconstruction density **normal**: 16 GB for <30 images per model, 32 GB for 30-500 images per model, 64 GB for >500 images per model
Reconstruction density **high**: 32 GB RAM for <30 images per model, 64 GB for >30 images per model
- *Solid State Drive (SSD):* 256 GB (recommended 1 TB or more)
- *Hard Disc Drive (HDD):* 1 TB or more
- *3D Graphics Card:* OpenCL 1.2 is mandatory.
For feasible performance a dedicated GPU with 4 GB VRAM or more is highly recommended.
Examples: nVidia Quadro P2000, nVidia GeForce RTX 2060, AMD Radeon Pro WX 5100, AMD Radeon RX5700 XT
Systems without dedicated GPU allow processing but performance may be heavily compromised.
- USB port (3.0)
- *Display:* 1920x1200, 32-bit colour screen
- *Software installation requires administrator privileges*

Design volume



Muck pile volume

